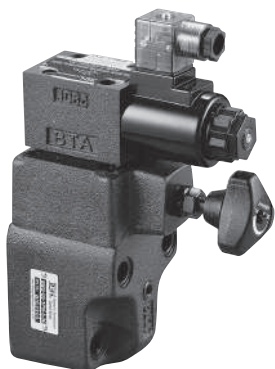
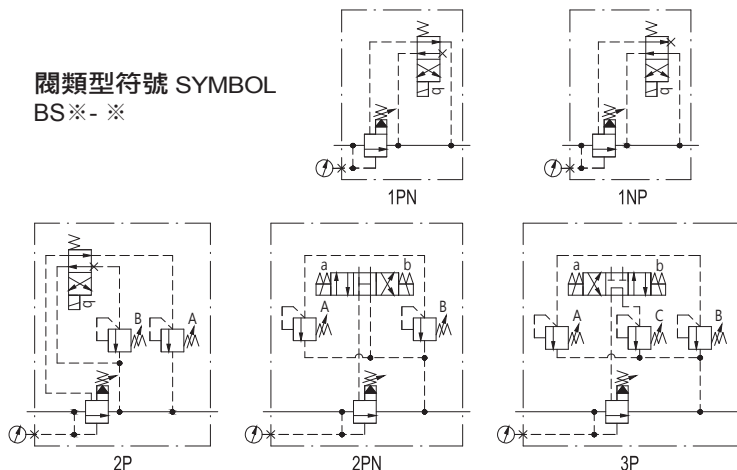


## Solenoid Control Relief Valve



閥類型符號 SYMBOL  
BS※-※



### 規格說明 SPECIFICATION

型式 MODEL	最高使用壓力 MAX. OPERATING PRESSURE (kgf/cm <sup>2</sup> )	調壓範圍 PRESSURE ADJ. RANGE kgf/cm <sup>2</sup>	最大流量 MAX. FLOW L/min	重量 (不含電磁閥) (kg) WEIGHT(NO CONTAIN SOLENOID VALVE)					
				TYPE MODEL	1PN	2PN	2P	3P	
BSG-03	250	0 : 7-35 1 : 7-70 2 : 7-140 3 : 7-210	100	BSG-03	6.0	8.0	8.0	8.2	
BSG-06				BST-06	9.4	9.2	8.2	8.4	
BSG-10			BST-10	400	BSG-10	11.5	14	14.1	14.3
					BST-10	7.9			

### 型號說明 HOW TO ORDER

## BS G - 06 - 1PN - 3 - 30 - W220/50 - 20 - 40

電磁閥型式 SOLENOID TYPE

接線方式 WIRING

10 : 帶燈的集中連接盒  
WITH LAMP CENTRAL CONNECTION  
20 : 插入式接頭帶密封套 PLUG-IN CONNECTION

線圈電壓 COIL VOLTAGE

G12 : 12V DC      G24 : 24V DC  
W110 : 110/50/60Hz      W220 : 220/50/60Hz

調桿型式 ADJUSTMENT TYPE

30 : 標準型 STANDARD TYPE  
32 : T型推環直結式 THRUST RING LINK TYPE

調壓範圍 PRESSURE ADJUSTING RANGE

0 : 7-35 kgf/cm<sup>2</sup>      1 : 7-70 kgf/cm<sup>2</sup>  
2 : 7-140 kgf/cm<sup>2</sup>      3 : 7-210 kgf/cm<sup>2</sup>

閥型式 VALVE TYPE

1PN : 常開 NORMALLY VENTED  
1NP : 常閉 ENERGIZED TO VENT  
2PN : 兩段調整壓力加常開  
DUAL PRESSURE AND VENT  
2P : 兩段調整壓力  
DUAL PRESSURE ADJUSTING RANGES  
3P : 三段調整壓力  
THREE PRESSURE ADJUSTING RANGES

閥規格 VALVE SIZE

03 : 3/8"      06 : 3/4"      10 : 1-1/4"

安裝型式 MOUNTING

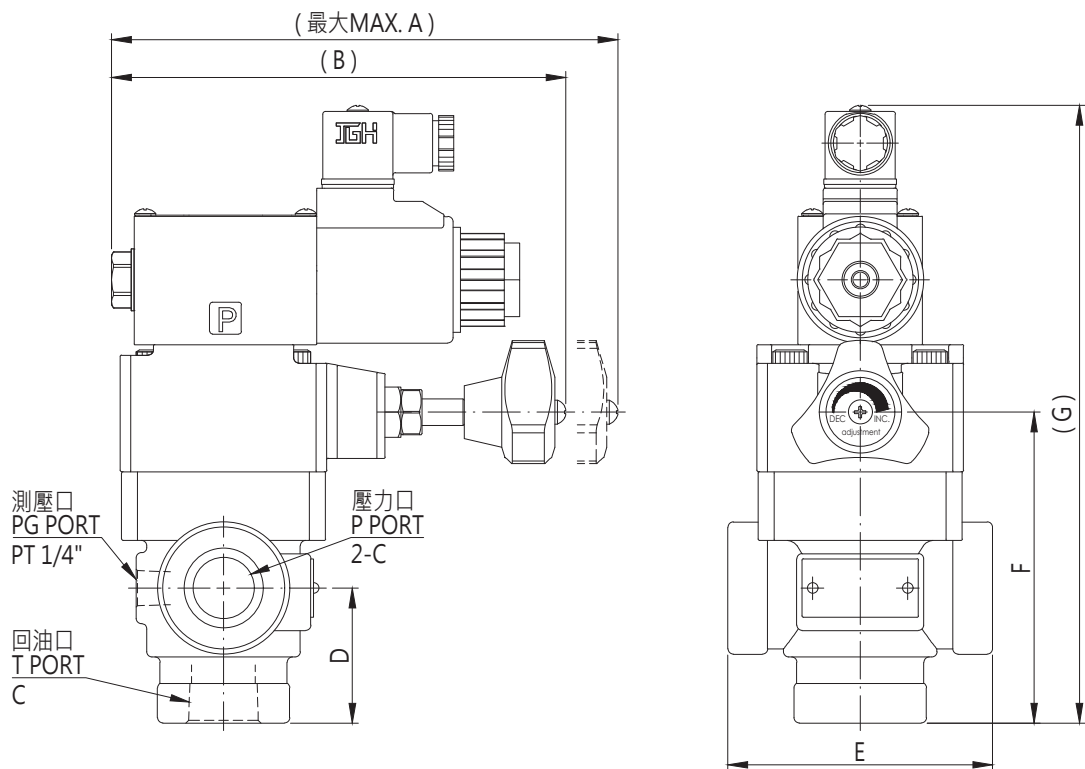
G : 板式安裝 SUB-PLATE MOUNTING  
T : 管式安裝 THREADED CONNECTIONS

系列編號 SERIES NUMBER

**附屬品 ATTACHMENT**

型式 MODEL	安裝螺絲 SOC HOL CAP SCREW		安裝扭矩 MOUNTING TORQUE N·m	4WE-06電磁閥重量 SOLENOID WEIGHT (kg)		
					AC	DC
<b>BSG-03</b>	M12 x 75L...2pcs	M12 x 95L...2pcs	104~127			
<b>BSG-06</b>	M16 x 60L...2pcs	M16 x 80L...2pcs	253~310	帶1個電磁鐵 Single coil	1.6	1.7
<b>BSG-10</b>	M20 x 75L...2pcs	M20 x 95L...2pcs	493~603	帶2個電磁鐵 Two coils	2.1	2.1

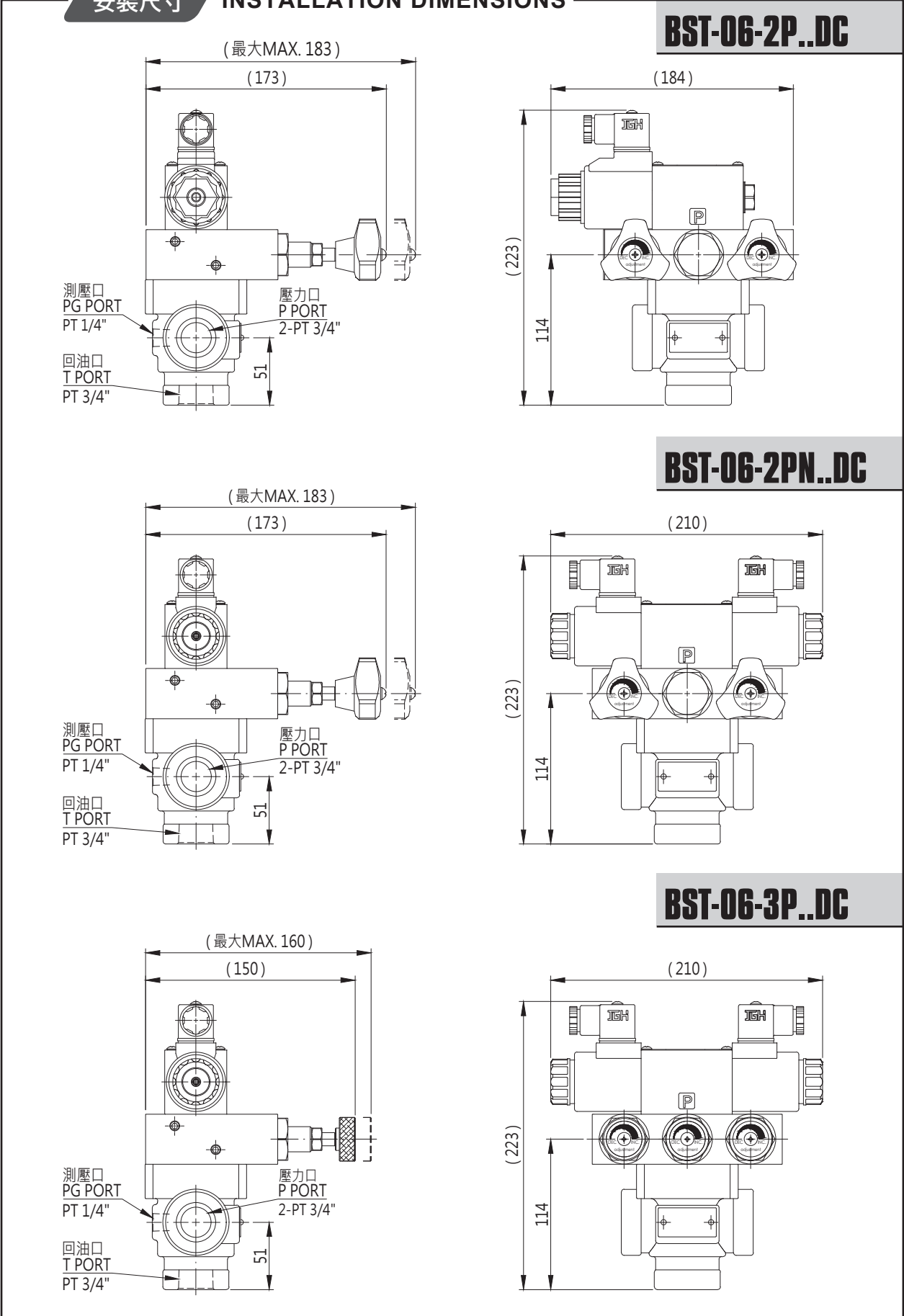
**BST-06,10-1PN/1NP..DC**



型式 MODEL	A	B	C	D	E	F	G
BST-06-1PN/1NP..DC	173	157	PT 3/4"	51	100	117.5	233
BST-10-1PN/1NP..DC	171	155	PT 1-1/4"	68	130	156.5	271

單位 UNIT : mm

**安裝尺寸 INSTALLATION DIMENSIONS**



單位 UNIT : mm

**安裝尺寸 INSTALLATION DIMENSIONS**

**BSG-03~10-1PN/1NP..DC**

通用底板尺寸

APPLICATIVE

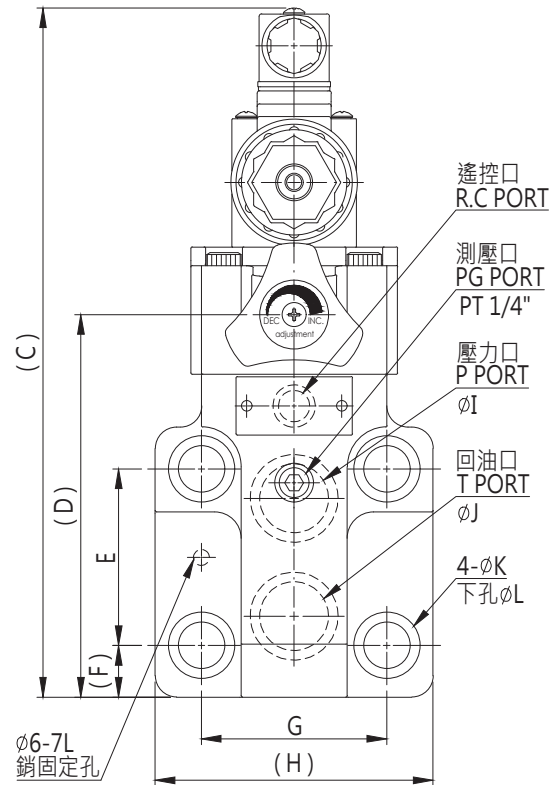
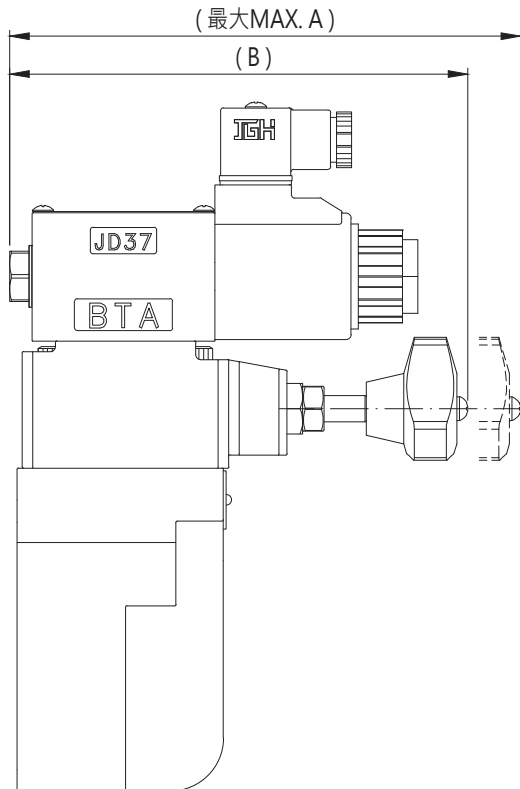
SUB-PLATE DIMENSIONS

**BSG-03 ( MA - 02 - 1 )**

**BSG-06 ( MA - 02 - 2 )**

**BSG-10 ( MA - 02 - 3 )**

(詳見 E01-01 Page E01-01)



型式 MODEL	A	B	C	D	E	F
BSG-03-1PN/1NP..DC	173	157	233	117.5	53.8	21
BSG-06-1PN/1NP..DC	173	157	260	144.5	66.7	19.5
BSG-10-1PN/1NP..DC	170	154	292	177.5	88.9	19.3

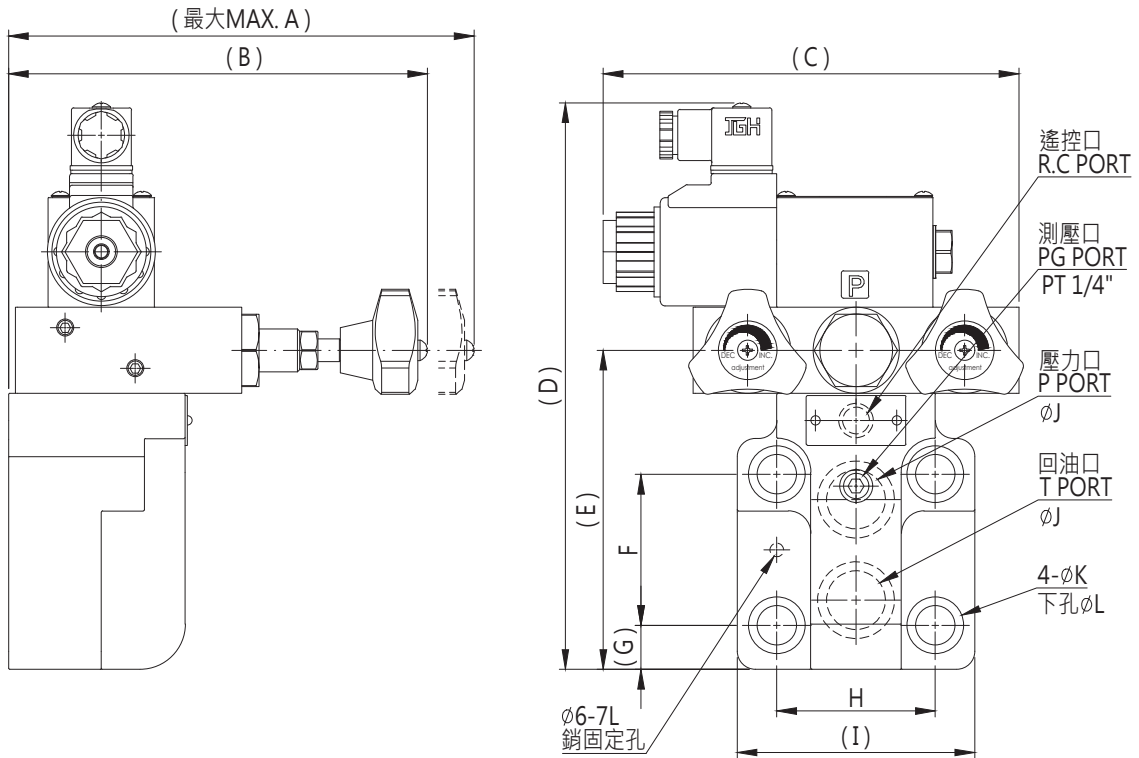
型式 MODEL	G	H	I	J	K	L
BSG-03-1PN/1NP..DC	53.8	84	15	15	20	13
BSG-06-1PN/1NP..DC	70	105	25	25	25	17.5
BSG-10-1PN/1NP..DC	82.6	124	30	30	31.5	21.5

單位 UNIT : mm

安裝尺寸 INSTALLATION DIMENSIONS

**BSG-03~10-2P..DC**

通用底板尺寸  
 APPLICATIVE  
 SUB-PLATE DIMENSIONS  
**BSG-03 ( MA - 02 - 1 )**  
**BSG-06 ( MA - 02 - 2 )**  
**BSG-10 ( MA - 02 - 3 )**  
 (詳見 E01-01 Page E01-01)



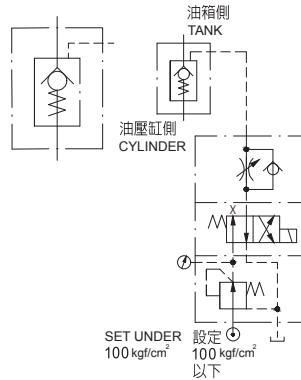
型式 MODEL	A	B	C	D	E	F
BSG-03-2P..DC	185	175	184	223	114	53.8
BSG-06-2P..DC	185	175	184	250	141	66.7
BSG-10-2P..DC	186	176	184	291	176	88.9

型式 MODEL	G	H	I	J	K	L
BSG-03-2P..DC	21	53.8	84	15	20	13
BSG-06-2P..DC	19.5	70	105	25	25	17.5
BSG-10-2P..DC	19.3	82.6	124	30	31.5	21.5



#### 閥類型符號 SYMBOL

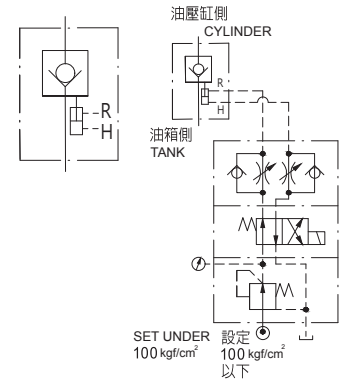
PF-※-20 範例 EXAMPLE



SET UNDER 設定  
100 kgf/cm<sup>2</sup> 100 kgf/cm<sup>2</sup>  
以下

#### 閥類型符號 SYMBOL

PF-※-30 範例 EXAMPLE



SET UNDER 設定  
100 kgf/cm<sup>2</sup> 100 kgf/cm<sup>2</sup>  
以下

#### 規格說明

#### SPECIFICATION

型式 MODEL	口徑 PORT	最大流量 MAX. FLOW L/min	最高使用壓力 MAX. OPERATING PRESSURE kgf/cm <sup>2</sup>	最高先導壓力 MAX. PILOT PRESSURE kgf/cm <sup>2</sup>	引導比例 PILOT RATIO	重量 (無法蘭) WEIGHT (NOT ADD PIPE FLANG) kg	重量 (含法蘭) WEIGHT (ADD PIPE FLANG) kg
PF-200-20	8"	4000	250	100	4.1 : 1	98	112
PF-200-30					4.8 : 1	99	113
PF-300-20	12"	7000			5.3 : 1	156	178
PF-300-30					5.1 : 1	158	180
PF-400-30	16"	14000			8 : 1	280	317
PF-500-30	20"	19000			8 : 1	709	775

- 註：1.實務上因高差壓不易形成，選用上以計算值為最大流量的70%以上為佳  
 2.表面最大流量時，壓力下降值約為0.3 kgf/cm<sup>2</sup>  
 3.開啟本閥前務必先洩壓，否則無法開啟  
 4.內六角螺絲強度區分為12.9T

- Note:1.The high pressure drop is not easy to happen in renlity selecting according to the calculation 70% of the Max.  
 2.While the Max. flow rate showed in the above table,the pressure drop is about 0.3 kgf/cm<sup>2</sup>  
 3.To avoid possible shock,decompress the pressure in the cylinder line first before the valve operates,other wise the valve does not perform well(The pilot pressure should be 4.5 times more higher than the main pressure)  
 4.Use high tension bolts of which stren gth are 12.9T

#### 型號說明

#### HOW TO ORDER

## PF - 200 - 20 - FT

法蘭型式 TYPE OF PIPE FLANG

FT : T口法蘭 (附低壓法蘭)

T PORT FLANG (ADD LOW PRESSURE PIPE FLANG)

無代號：不附法蘭 NO CODE : NOT ADD PIPE FLANG

引導型式 PILOT TYPE

20 : 彈簧式 SPRING TYPE

30 : 活塞式 CYLINDER TYPE

閥規格 VALVE SIZE

200 : 8"    300 : 12"    400 : 16"    500 : 20"

系列編號(法蘭連接)

SERIES NUMBER (FLANG CONNECTION)

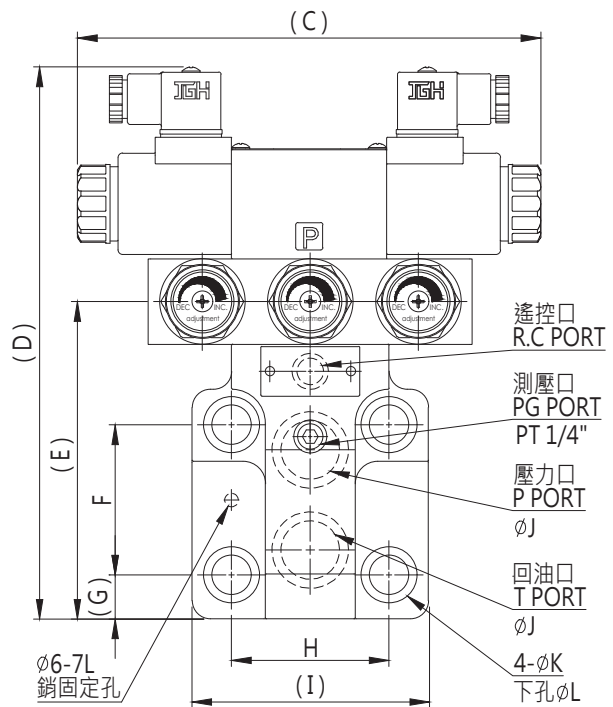
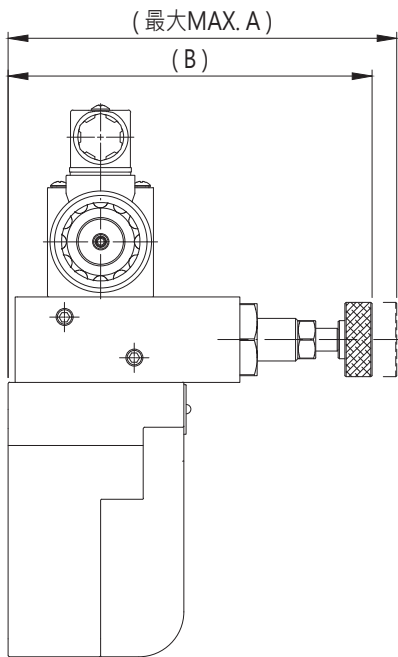
PF : 單段式 NON-DECOMPRESSION

單位 UNIT : mm

**安裝尺寸 INSTALLATION DIMENSIONS**

**BSG-03~10-3P..DC**

通用底板尺寸  
 APPLICATIVE  
 SUB-PLATE DIMENSIONS  
**BSG-03 ( MA - 02 - 1 )**  
**BSG-06 ( MA - 02 - 2 )**  
**BSG-10 ( MA - 02 - 3 )**  
 (詳見 E01-01 Page E01-01)



型式 MODEL	A	B	C	D	E	F
BSG-03-3P..DC	162	152	210	223	114	53.8
BSG-06-3P..DC	162	152	210	250	141	66.7
BSG-10-3P..DC	163	153	210	291	176	88.9

型式 MODEL	G	H	I	J	K	L
BSG-03-3P..DC	21	53.8	84	15	20	13
BSG-06-3P..DC	19.5	70	105	25	25	17.5
BSG-10-3P..DC	19.3	82.6	124	30	31.5	21.5