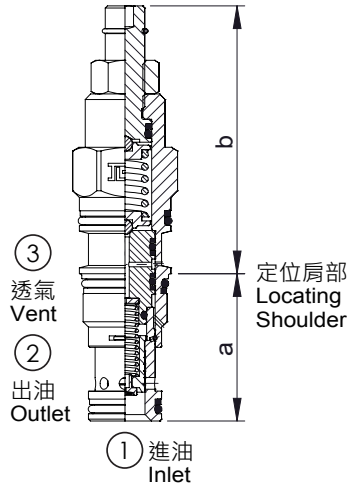
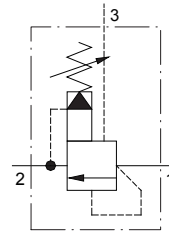


Ventable, pilot operated, balanced piston relief valve



閥類型符號 SYMBOL
J-RV※A



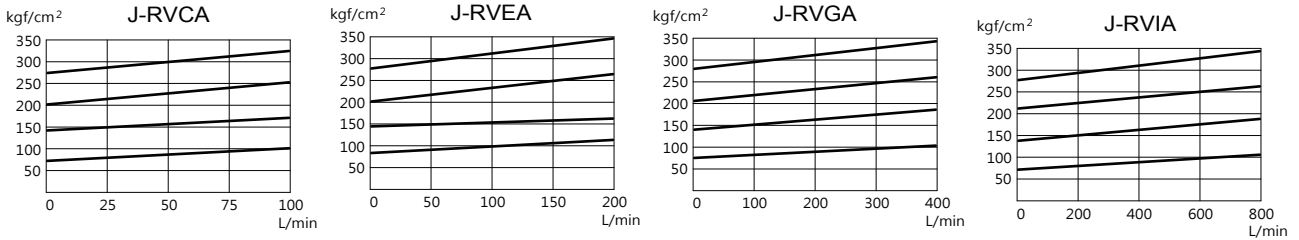
插裝閥尺寸

	a	b		
		L	K	Y
J-RVCA	35	63.8	66.3	80.8
J-RVEA	35	71.6	74.1	88.6
J-RVGA	46	83.5	85.8	100.3
J-RVIA	63.5	100.2	102.6	117.1

性能曲線

PERFORMANCE CURVES

洩壓曲線



規格說明

SPECIFICATION

型式 MODEL	最高使用壓力 MAX. OPERATING PRESSURE (kgf/cm ²)	最大流量 MAX. FLOW L/min	安裝扭矩 MOUNTING TORQUE N·m	成型孔 CAVITY	重量 WEIGHT kg
J-RVCA	350	60	41-47	T-11A	0.16
J-RVEA		120	61-68	T-2A	0.29
J-RVGA		240	203-217	T-17A	0.63
J-RVIA		480	474-508	T-19A	1.43

型號說明

HOW TO ORDER

J - RVEA - A - L

控制方式 CONTROL
L: 內六角螺桿調整
STANDARD SCREW ADJUSTMENT
K: 旋鈕 HANDKNOB
Y: 三爪旋鈕 TRI-GRIP HANDKNOB

調壓範圍 PRESSURE ADJUSTING RANGE
A: 7-210 kgf/cm² B: 3.5-105 kgf/cm²
C: 10.5-420 kgf/cm² D: 1.7-55 kgf/cm²
E: 1.7-28 kgf/cm² W: 10.5-315 kgf/cm²

閥規格 VALVE SIZE
RVCA: 60 L/min RVEA: 120 L/min
RVGA: 240 L/min RVIA: 480 L/min

系列編號 SERIES NUMBER