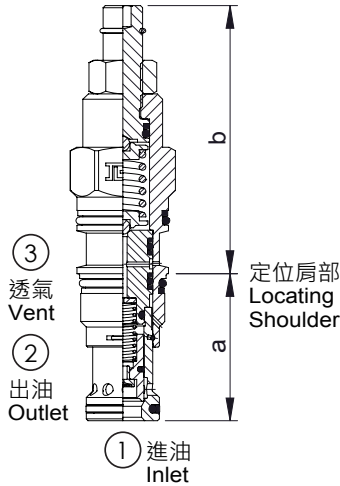
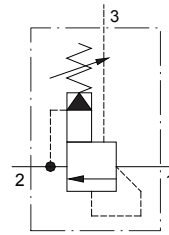


# Ventable, pilot operated, balanced poppet relief valve



閥類型符號 SYMBOL  
J-RV※S



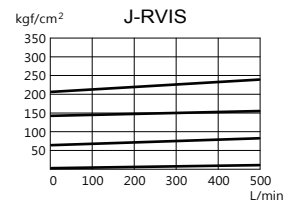
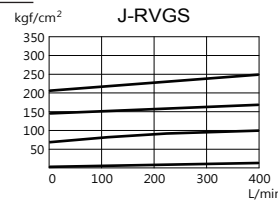
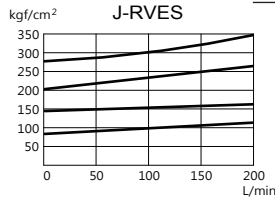
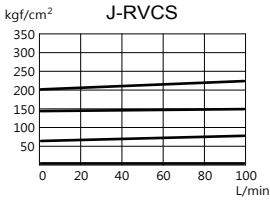
插裝閥尺寸

	a			b		
	L	K	Y	L	K	Y
J-RVCS	35	63.8	66.3	80.8		
J-RVES	35	71.6	74.1	88.6		
J-RVGS	46	83.5	85.8	100.3		
J-RVIS	63.5	100.2	102.6	117.1		

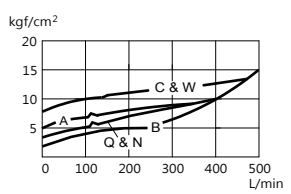
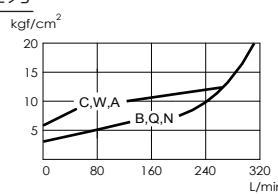
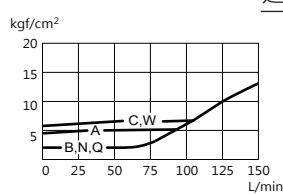
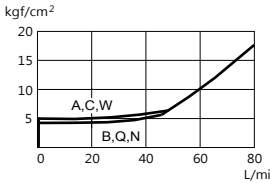
## 性能曲線

## PERFORMANCE CURVES

### 洩壓曲線



### 透氣壓力



## 規格說明

## SPECIFICATION

型式 MODEL	最高使用壓力 MAX. OPERATING PRESSURE (kgf/cm <sup>2</sup> )	最大流量 MAX. FLOW L/min	安裝扭矩 MOUNTING TORQUE N·m	成型孔 CAVITY	重量 WEIGHT kg
J-RVCS	350	60	41-47	T-11A	0.16
J-RVES		95	61-68	T-2A	0.29
J-RVGS		200	203-217	T-17A	0.63
J-RVIS		480	474-508	T-19A	1.43

## 型號說明

## HOW TO ORDER

# J - RVES - A - L

控制方式 CONTROL  
L : 內六角螺桿調整  
STANDARD SCREW ADJUSTMENT  
K : 旋鈕 HANDKNOB

調壓範圍 PRESSURE ADJUSTING RANGE  
A : 7-210 kgf/cm<sup>2</sup>    B : 3.5-105 kgf/cm<sup>2</sup>  
C : 10.5-420 kgf/cm<sup>2</sup>    N : 4-55 kgf/cm<sup>2</sup>  
Q : 4-28 kgf/cm<sup>2</sup>    W : 10.5-315 kgf/cm<sup>2</sup>

閥規格 VALVE SIZE  
RVCS : 60 L/min    RVES : 95 L/min  
RVGS : 200 L/min    RVIS : 480 L/min

系列編號 SERIES NUMBER