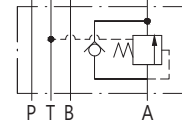
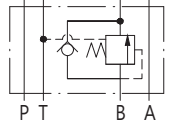


閥類型符號 SYMBOL

MSCV - ※



MSCV-※-A



MSCV-※-B

規格說明

SPECIFICATION

型式 MODEL	最高使用壓力 MAX. OPERATING PRESSURE (kgf/cm ²)	調壓範圍 PRESSURE ADJ. RANGE kgf/cm ²	最大流量 MAX. FLOW L/min	重量 WEIGHT kg
MSCV-02	250	0 : 18-35 1 : 35-70 2 : 70-140 3 : 70-210	35	1.5
MSCV-03			70	4.0
MSCV-04			190	7.5
MSCV-06			300	14

型號說明

HOW TO ORDER

MSCV - 02 - A - 3 - A - L

旋轉型式 KNOB TYPE

無代號為K : 把手旋鈕螺桿調整(標準型)

NO CODE FOR K : HAFT TURNING KNOB BOLT ROD ADJUST (STANDARD TYPE)

L : 內六角螺桿調整

INNER HEXANGULAR BOLT ROD ADJUST

把手方向 DIRECTION OF KNOB

A : A口側 A PORT SIDE

B : B口側(標準型) B PORT SIDE (STANDARD TYPE)

調壓範圍 PRESSURE ADJUSTING RANGE

0 : 18-35 kgf/cm² 1 : 35-70 kgf/cm²

2 : 70-140 kgf/cm² 3 : 70-210 kgf/cm²

控制油口 CONTROL OIL PORT

A : A口控制 A PORT

B : B口控制 B PORT

閥規格 VALVE SIZE

02 : 1/4" 03 : 3/8" 04 : 1/2" 06 : 3/4"

系列編號 SERIES NUMBER

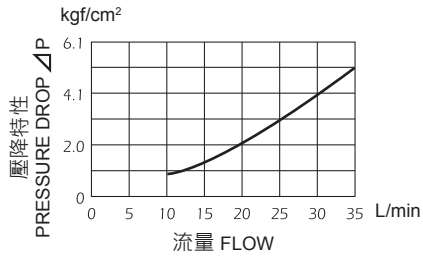
測試條件 PERFORMANCE CURVES

測試油黏度 TEST FLUID VISCOSITY : 35cSt

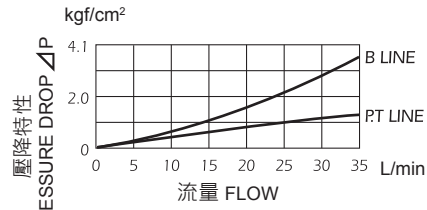
測試油溫度 TEST TEMPERATURE : 50°C

● MSCV-02-A-B

自由流時壓力降特性
PRESSURE DROP FOR FREE FLOW

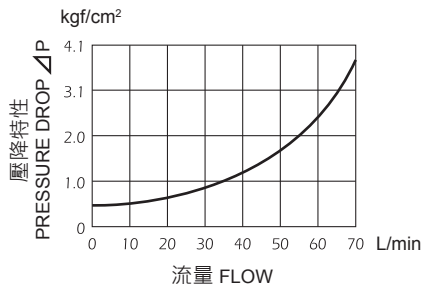


壓力降特性 PRESSURE DROP

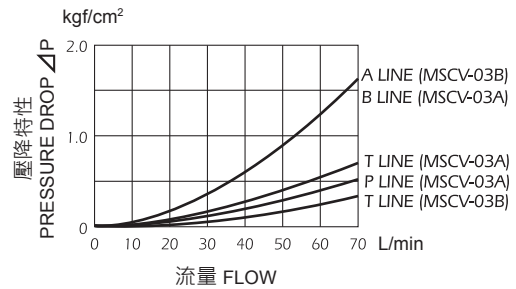


● MSCV-03-A-B

自由流時壓力降特性
PRESSURE DROP FOR FREE FLOW

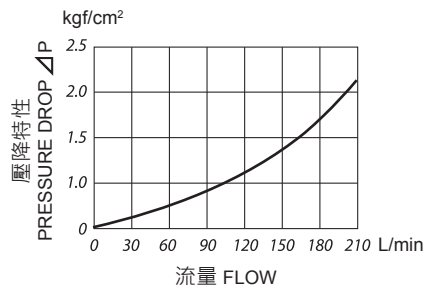


壓力降特性 PRESSURE DROP

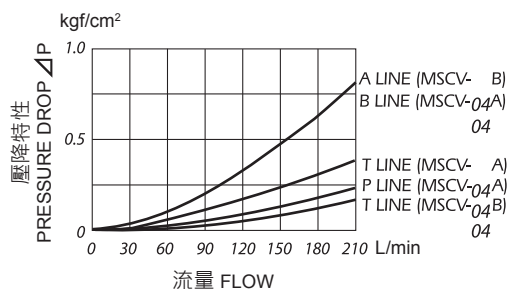


● MSCV-04-A-B

自由流時壓力降特性
PRESSURE DROP FOR FREE FLOW



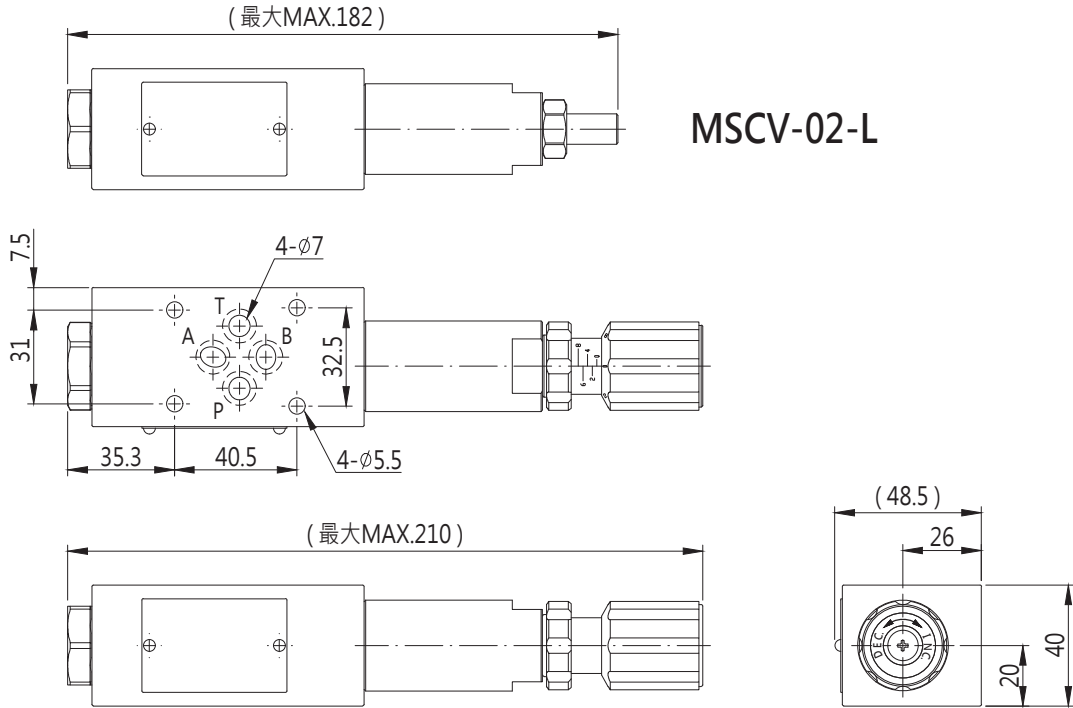
壓力降特性 PRESSURE DROP



安裝尺寸 INSTALLATION DIMENSIONS

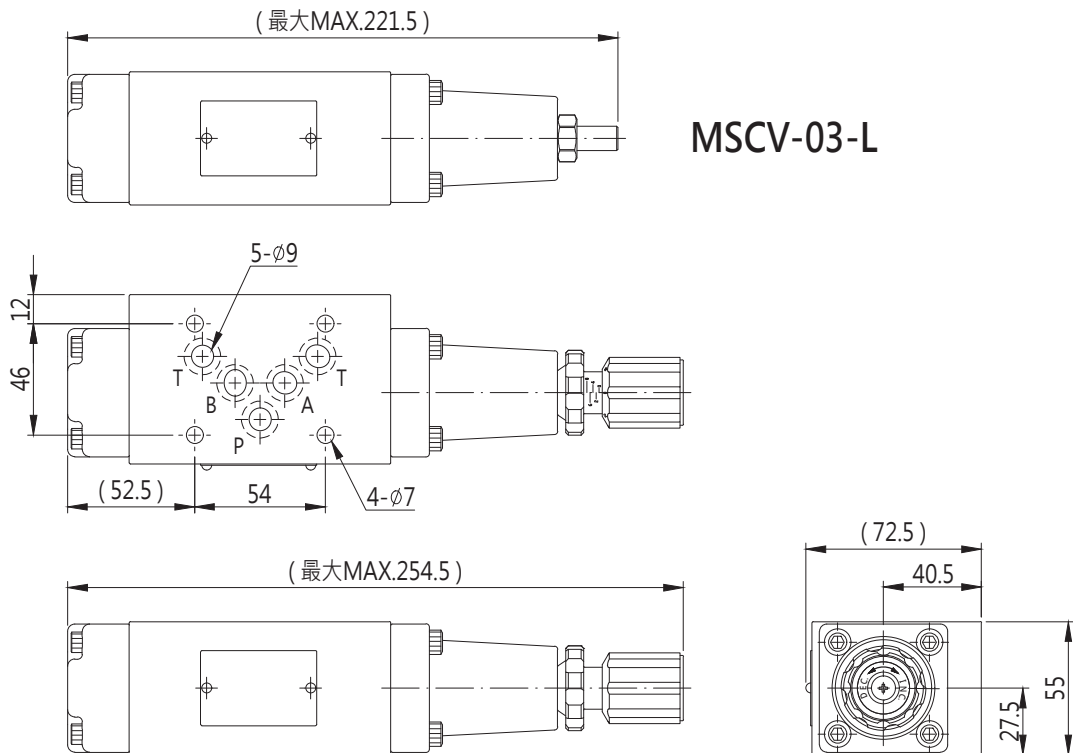
MSCV-02

MSCV-02-L



MSCV-03

MSCV-03-L

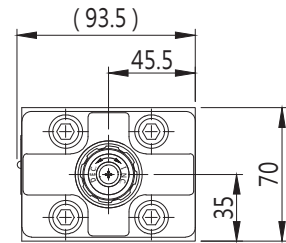
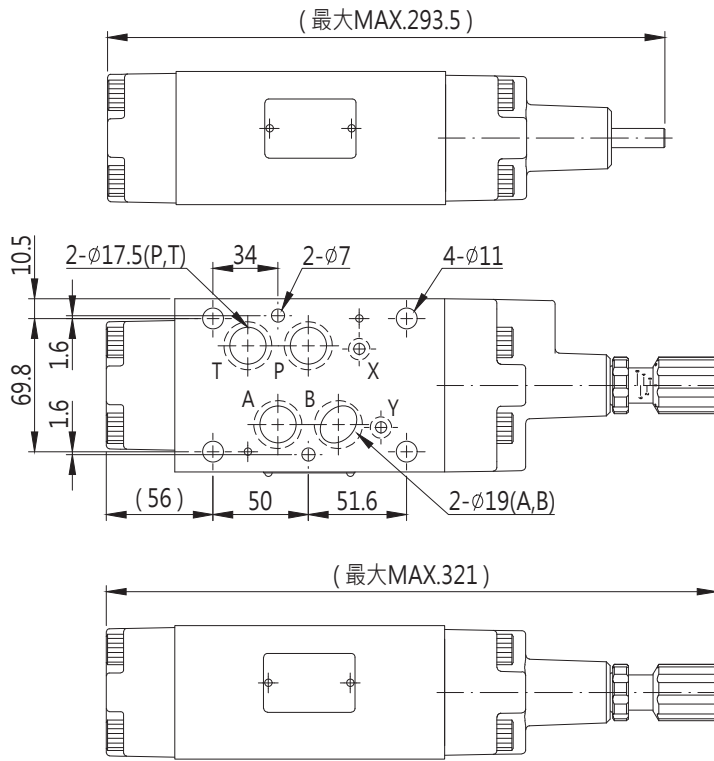


單位 UNIT : mm

安裝尺寸 INSTALLATION DIMENSIONS

MSCV-04

MSCV-04-L



MSCV-06

