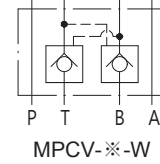
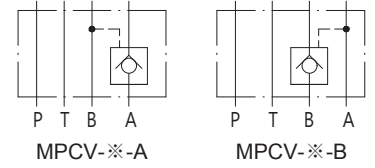


## Modular Pilot Operated Check Valve

閥類型符號 SYMBOL  
MPCV - ※



### 規格說明

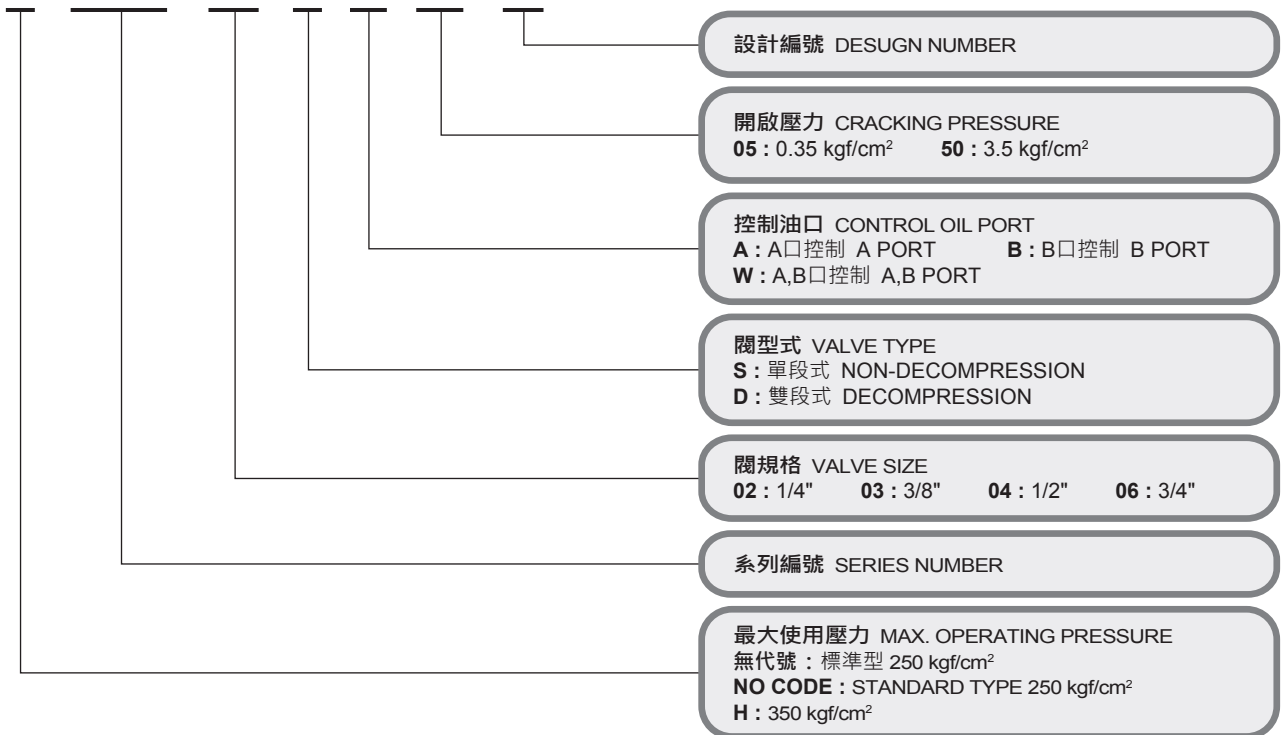
### SPECIFICATION

型式 MODEL	最高使用壓力 MAX. OPERATING PRESSURE kgf/cm <sup>2</sup>	開啟壓力 CHACKING PRESSURE kgf/cm <sup>2</sup>	最大流量 MAX. FLOW L/min	重量 WEIGHT kg
MPCV-02-A/B	標準型 STD. : 250 H : 350	05: 0.35 50: 3.5	35	1.1
MPCV-02-W				1.2
MPCV-03-A/B			70	2.6
MPCV-03-W				2.7
MPCV-04-A/B			190	7.3
MPCV-04-W				
MPCV-06-A/B			300	12.8
MPCV-06-W				

### 型號說明

### HOW TO ORDER

**H - MPCV - 02 - D - A - 05 - 10**



## 測試條件 PERFORMANCE CURVES

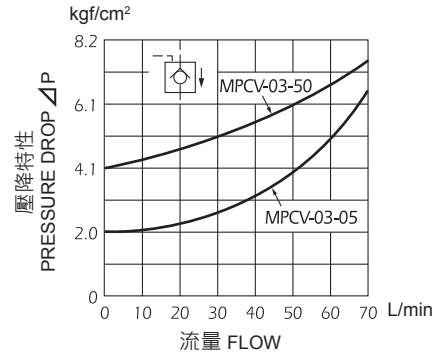
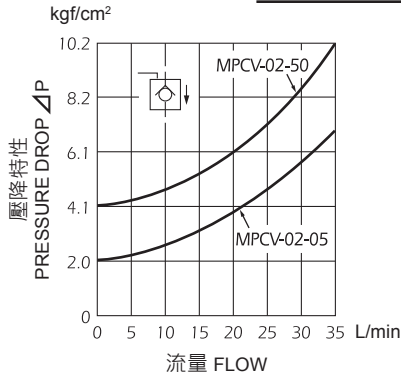
測試油黏度 TEST FLUID VISCOSITY : 35cSt

測試油溫度 TEST TEMPERATURE : 50°C

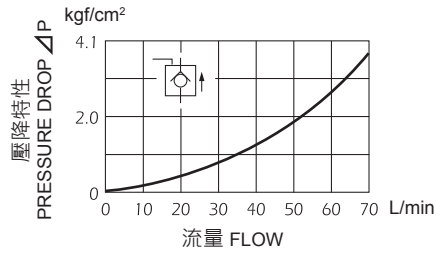
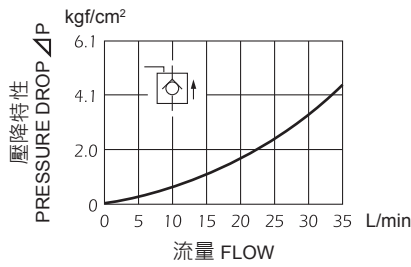
### ● MPCV-02

### ● MPCV-03

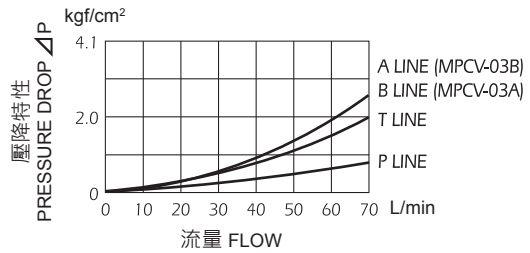
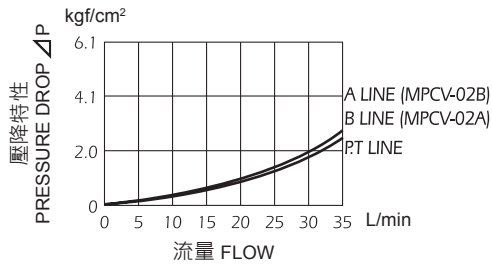
#### 自由流壓力降特性 PRESSURE DROP FREE FLOW



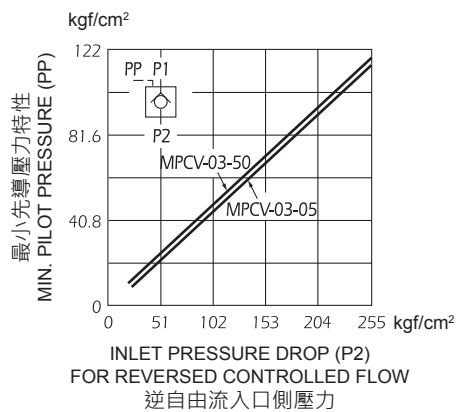
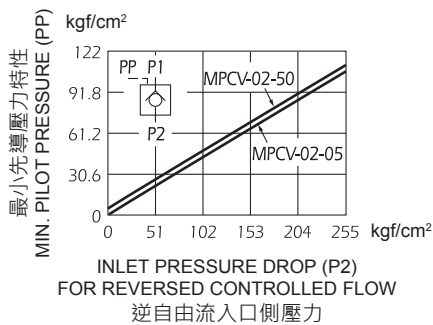
#### 逆自由流壓力降特性 PRESSURE DROP FOR REVERSE CONTROLLED FLOW



#### 壓力降特性 PRESSURE DROP



#### 最小先導壓力特性 MIN. PILOT PRESSURE



## 測試條件 PERFORMANCE CURVES

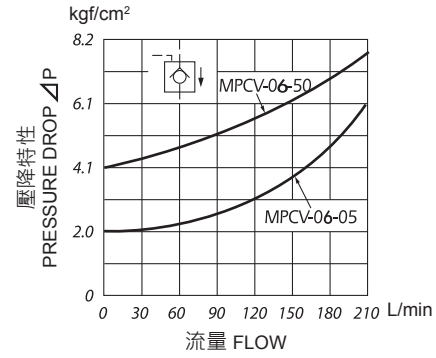
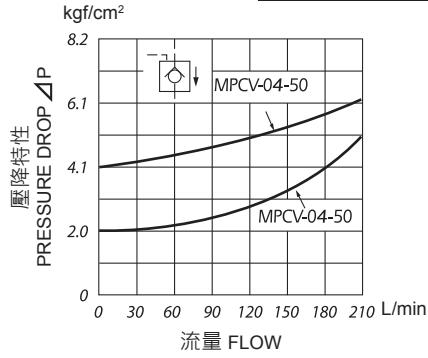
測試油黏度 TEST FLUID VISCOSITY : 35cSt

測試油溫度 TEST TEMPERATURE : 50°C

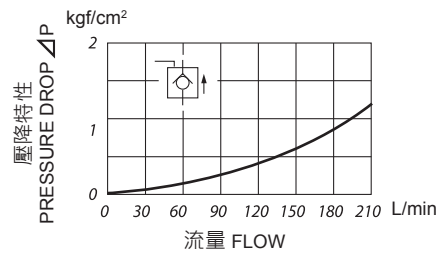
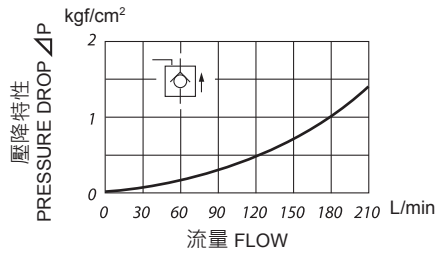
### ● MPCV-04

### ● MPCV-06

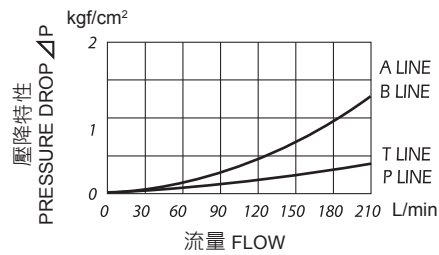
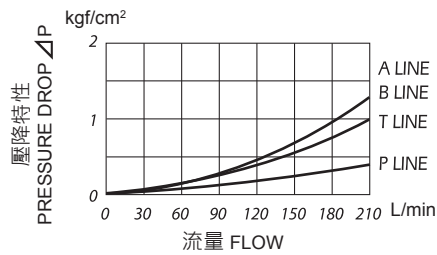
#### 自由流壓力降特性 PRESSURE DROP FREE FLOW



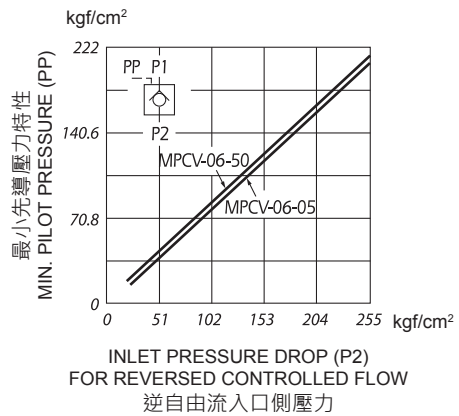
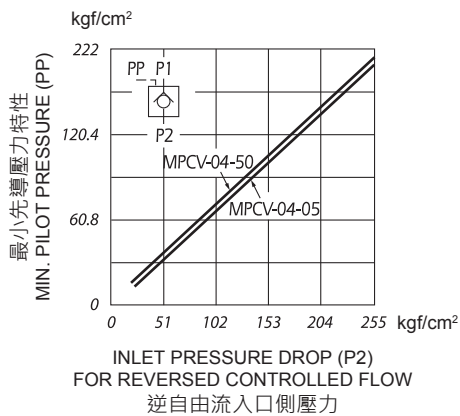
#### 逆自由流壓力降特性 PRESSURE DROP FOR REVERSE CONTROLLED FLOW



#### 壓力降特性 PRESSURE DROP



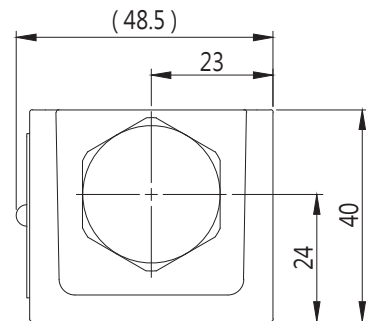
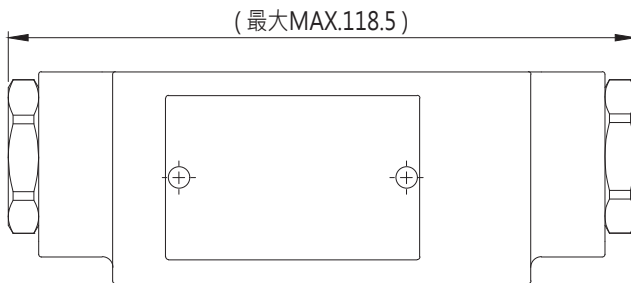
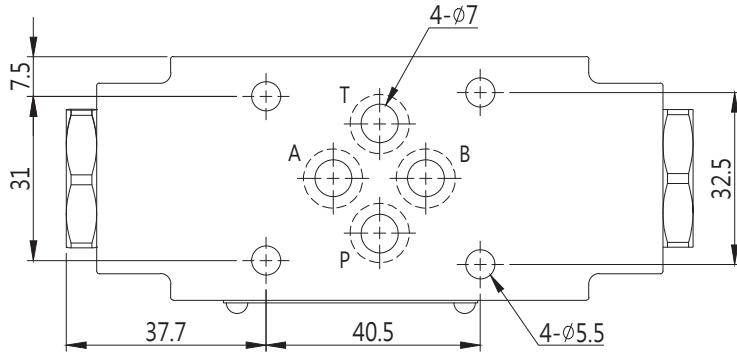
#### 最小先導壓力特性 MIN. PILOT PRESSURE



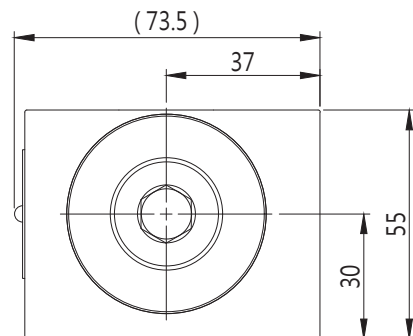
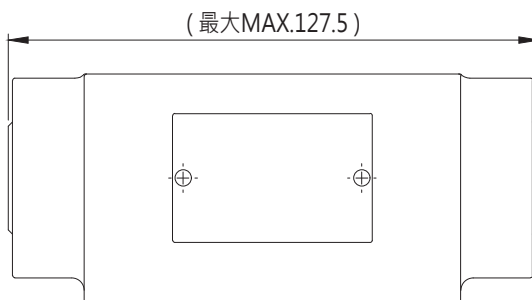
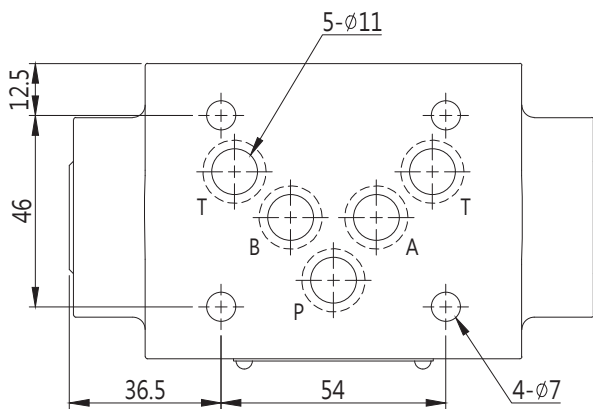
單位 UNIT : mm

**安裝尺寸** INSTALLATION DIMENSIONS

**MPCV-02-S/D**

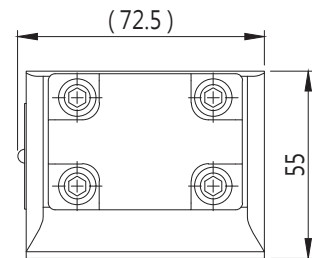
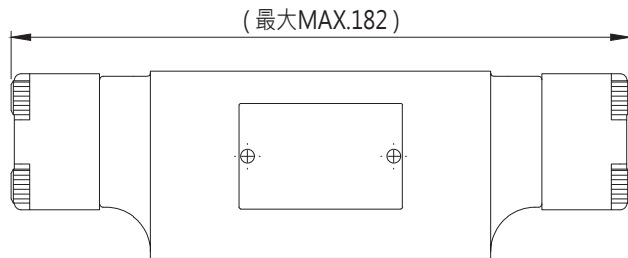
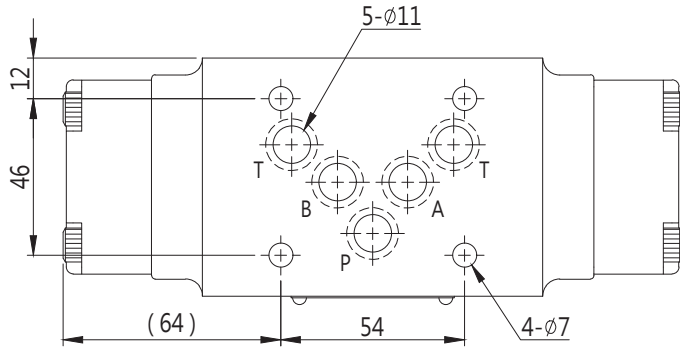


**MPCV-03**

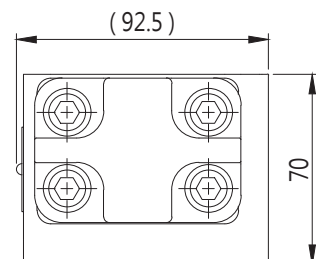
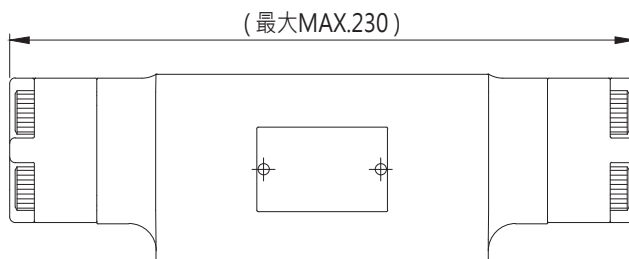
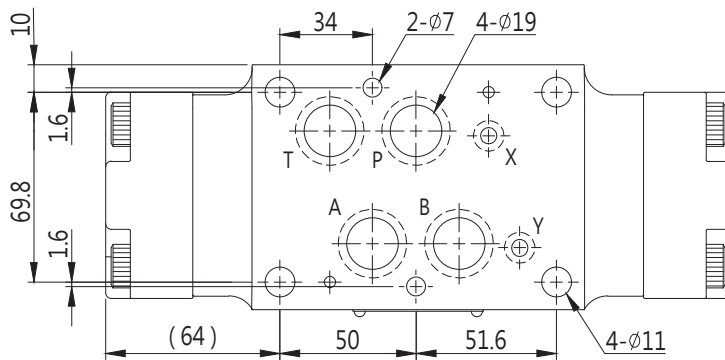


## 安裝尺寸 INSTALLATION DIMENSIONS

### MPCV-03-S/D



### MPCV-04-S/D



單位 UNIT : mm

## 安裝尺寸 INSTALLATION DIMENSIONS

### MPCV-06-S/D

