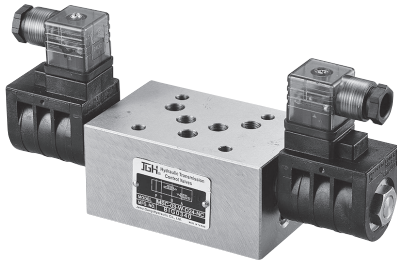


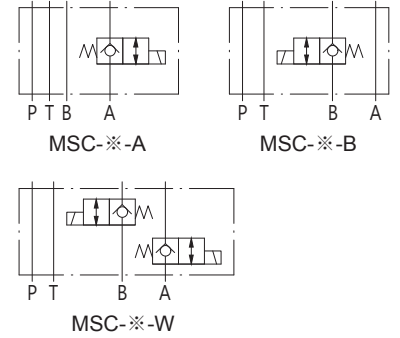
Modular Solenoid Check Valve



Modular Control Valve



閥類型符號 SYMBOL
MSC - ※



規格說明

SPECIFICATION

| 型式 MODEL | 最高使用壓力 MAX. OPERATING PRESSURE kgf/cm ² | 最大流量 MAX. FLOW L/min | 重量 WEIGHT kg |
|-------------|--|----------------------------|--------------------|
| MSC-02-A/B | 250 | 20 | 1.3 |
| MSC-02-W | | | 1.8 |
| MSC-03-A/B | | 40 | 3.5 |
| MSC-03-W | | | 4.4 |

型號說明

HOW TO ORDER

MSC - 02 - A - W230 - NO

閥型式 VALVE TYPE
NO : 常開 NORMALLY VENTED
NC : 常閉 ENERGIZED TO VENT

線圈電壓 COIL VOLTAGE
G12 : 12V DC G24 : 24V DC
W115 : 115V AC W230 : 230V AC

控制油口 CONTROL OIL PORT
A : A口控制 A PORT B : B口控制 B PORT
W : A,B口控制 A,B PORT

閥規格 VALVE SIZE
02 : 1/4" 03 : 3/8"

系列編號 SERIES NUMBER

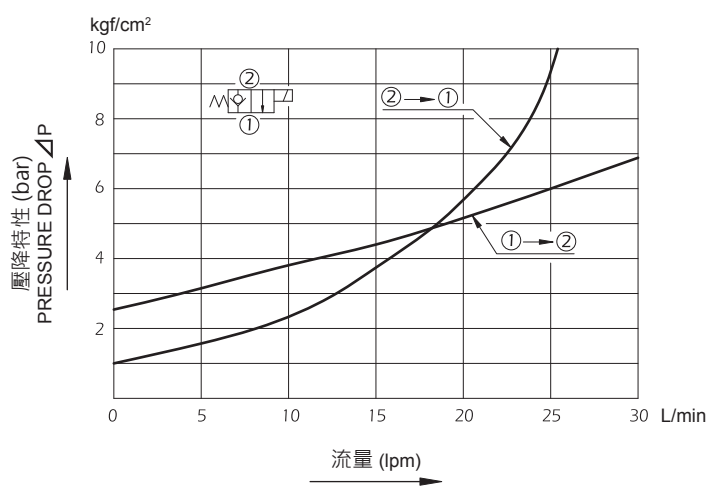
測試條件 PERFORMANCE CURVES

測試油黏度 TEST FLUID VISCOSITY : 35cSt

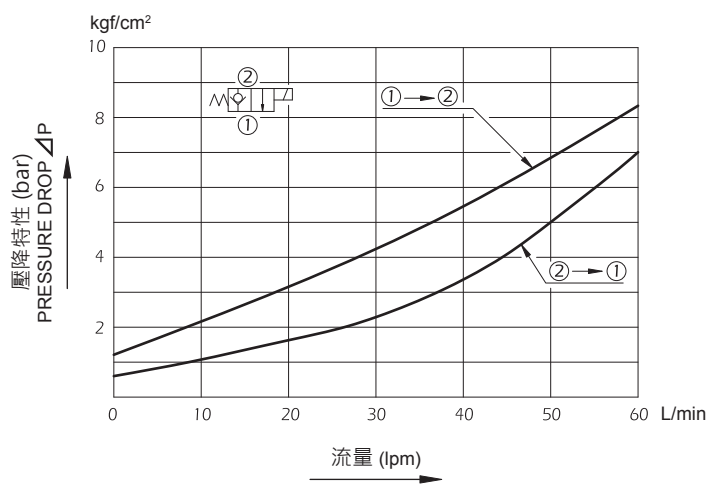
測試油溫度 TEST TEMPERATURE : 50°C

流量-壓力特性 NOMINAL OVERRIDE

● MSC-02

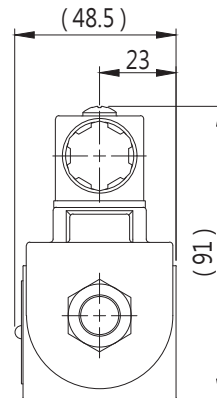
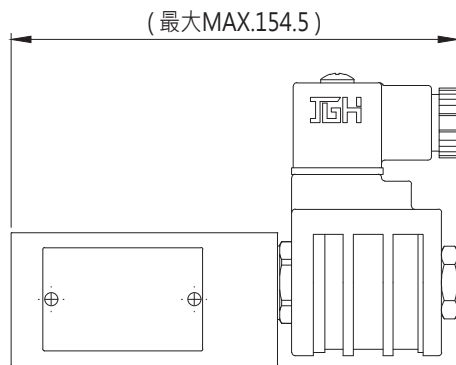
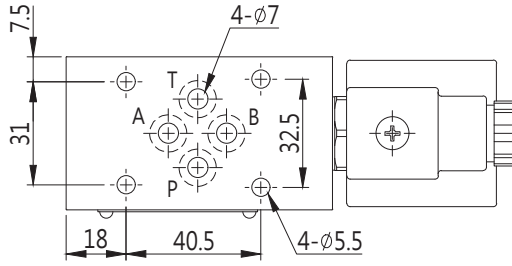


● MSC-03

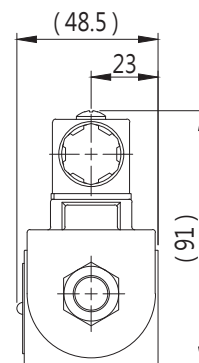
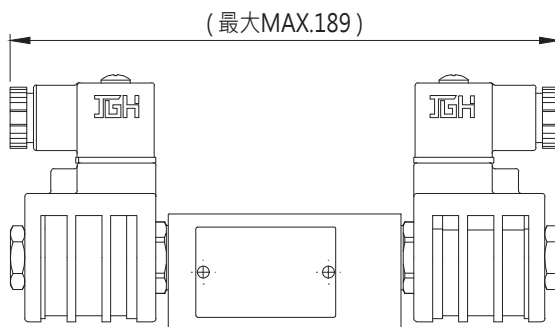
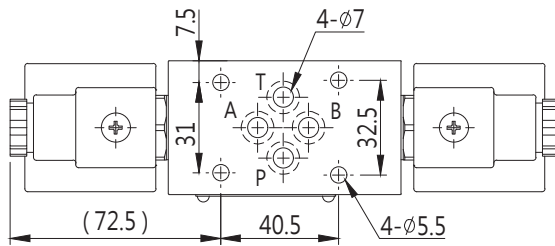


安裝尺寸 INSTALLATION DIMENSIONS

MSC-02



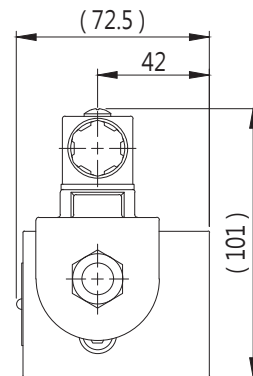
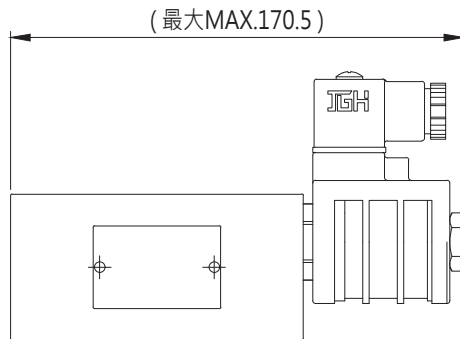
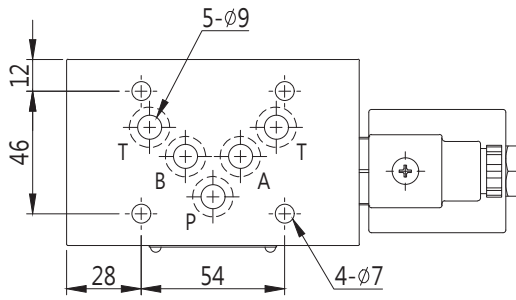
MSC-02-W



單位 UNIT : mm

安裝尺寸 INSTALLATION DIMENSIONS

MSC-03



MSC-03-W

