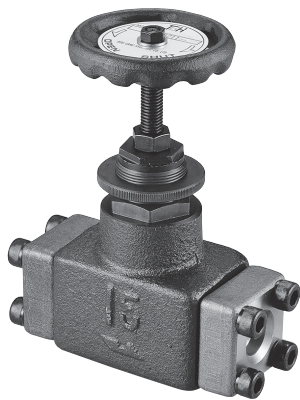
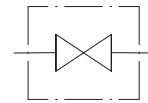


Stop Valve



閥類型符號 SYMBOL
H※-4211-※



規格說明

SPECIFICATION

型式 MODEL			口徑 PORT	最高使用壓力 MAX. OPERATING PRESSURE kgf/cm ²	定格流量 RATED FLOW L/min
板式安裝 SUB-PLATE MOUNTING	管式安裝 THREADED CONNECTIONS	法蘭安裝 FLANGED CONNECTIONS			
HG- 4211-10-23	HT- 4211-10-23	HF- 4211-10-23	3/8"	315	30
-	HT- 4211-15-23	HF- 4211-15-23	1/2"		60
HG- 4211-20-23	HT- 4211-20-23	HF- 4211-20-23	3/4"		100
-	HT- 4211-25-23	HF- 4211-25-23	1"		220
HG- 4211-32-23	HT- 4211-32-23	HF- 4211-32-23	1-1/4"		280
-	HT- 4211-40-23	HF- 4211-40-23	1-1/2"		500
-	HT- 4211-50-23	HF- 4211-50-23	2"		800

型號說明

HOW TO ORDER

H G - 4211 - 32 - 23

設計編號 DESIGN NUMBER

閥規格 VALVE SIZE

系列編號 SERIES NUMBER

安裝型式 MOUNTING
G : 板式安裝 SUB-PLATE MOUNTING
T : 管式安裝 THREADED CONNECTIONS
F : 法蘭安裝 FLANGED CONNECTIONS

系列編號 SERIES NUMBER

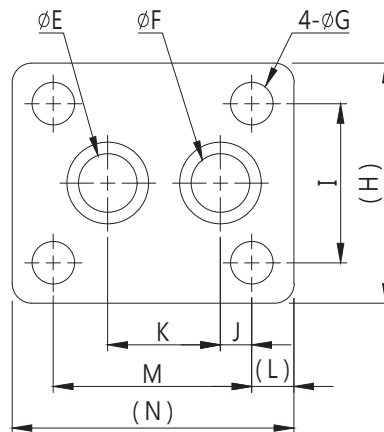
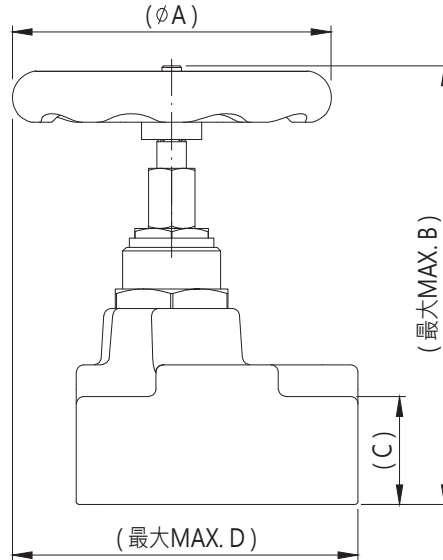


單位 UNIT : mm

安裝尺寸

INSTALLATION DIMENSIONS

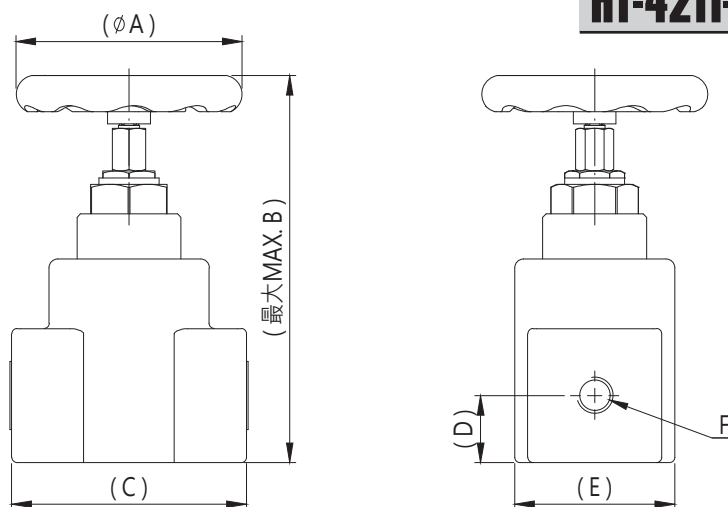
HG-4211-10~32



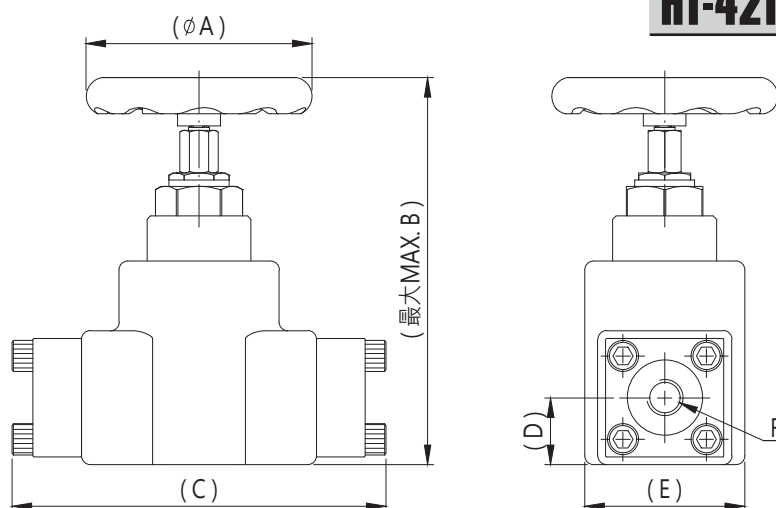
型式 MODEL	A	B	C	D	E	F	G	H	I	J
HG-4211-10	90	148	34	102	14.5	15	9	75	51.5	20.5
HG-4211-20	130	175	44.5	150	20	24.5	17.5	101	66	24
HG-4211-32	151	246	73	151	30	30	21.5	130	92	19.4

型式 MODEL	K	L	M	N	安裝螺絲 SOC HOL CAP SCREW	安裝扭矩 MOUNTING TORQUE N·m	重量 WEIGHT kg
HG-4211-10	26	10.5	65	90	4-M8x45L	31~38	3.9
HG-4211-20	46	17	83	117	4-M16x55L	253~310	4.4
HG-4211-32	51.6	21	92	130	4-M20x95L	493~603	13

單位 UNIT : mm

安裝尺寸 INSTALLATION DIMENSIONS
HT-4211-10,20,25,32


型式 MODEL	A	B	C	D	E	F	重量 WEIGHT kg
HT-4211-10	90	173	90	34	47	PT 3/8"	2.1
HT-4211-20	130	208	100	30.5	62	PT 3/4"	4.3
HT-4211-25	130	228	135	38	94	PT 1"	8.5
HT-4211-32	150	250	150	46	95	PT 1-1/4"	10.7

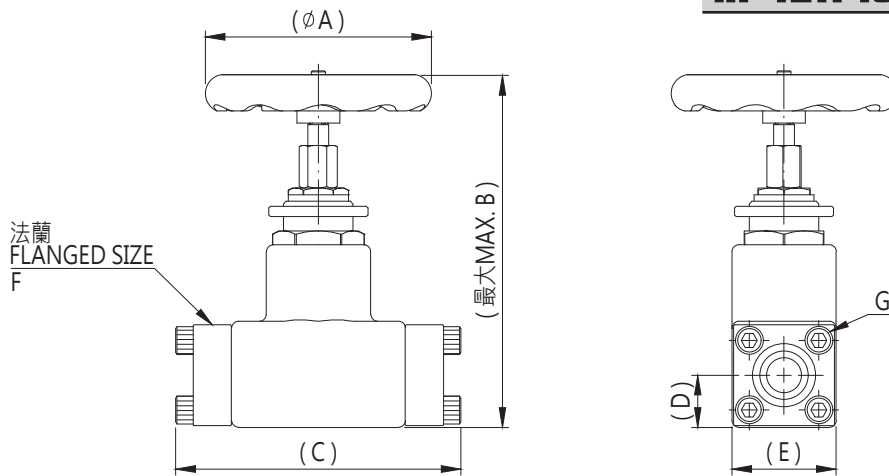
HT-4211-15,40,50


型式 MODEL	A	B	C	D	E	F	重量 WEIGHT kg
HT-4211-15	90	175	154	35	65	PT 1/2"	4.4
HT-4211-40	180	294	263	50	117	PT 1-1/2"	20.5
HT-4211-50	180	329	278	65	137	PT 2"	27.2

單位 UNIT : mm

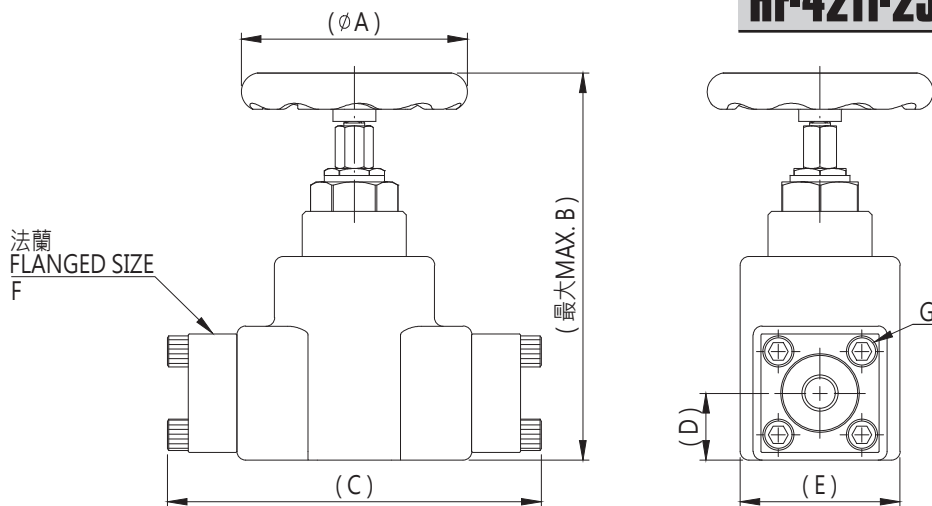
安裝尺寸 INSTALLATION DIMENSIONS

HF-4211-10~20



型式 MODEL	A	B	C	D	E	F	G	重量 WEIGHT kg
HF-4211-10	90	172	148	34	64	SSA10	8-M10x35L	3.9
HF-4211-15	90	175	154	35	65	SSA15	8-M10x35L	4.4
HF-4211-20	130	208	163	30.5	62	SSA20	8-M10x35L	5.7

HF-4211-25~50



型式 MODEL	A	B	C	D	E	F	G	重量 WEIGHT kg
HF-4211-25	130	228	215.5	38	94	SSA25	8-M12x45L	10.4
HF-4211-32	150	250	232	46	95	SSA32	8-M12x45L	12.8
HF-4211-40	180	294	263	50	117	SSA40	8-M16x55L	20.5
HF-4211-50	180	329	278	65	137	SSA50	8-M16x55L	27.2