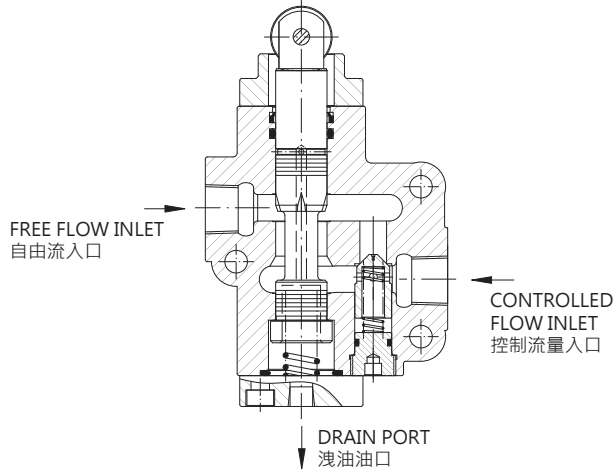
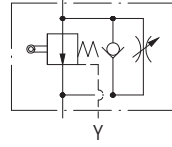


Deceleration Throttle And Check Valve

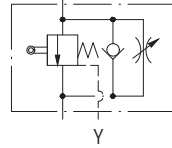


閥類型符號 SYMBOL
ZCT - ※

常開
NORMALLY OPEN



常閉
NORMALLY CLOSED



規格說明 SPECIFICATION

型式 MODEL	最高使用壓力 MAX. OPERATING PRESSURE (kgf/cm ²)	DR口最大容許背壓 DR PORT MAX. BACK PRESSURE (kgf/cm ²)	最大流量 MAX. FLOW L/min	重量 WEIGHT kg
ZCT-03	150	10	30	4.9
ZCT-06	250		80	6.1

型號說明 HOW TO ORDER

ZCT-06-C-10

設計編號 DESIGN NUMBER

閥型式 VALVE TYPE
B : 常開 NORMALLY OPEN
C : 常閉 NORMALLY CLOSED

閥規格 VALVE SIZE
03 : 3/8" 06 : 3/4"

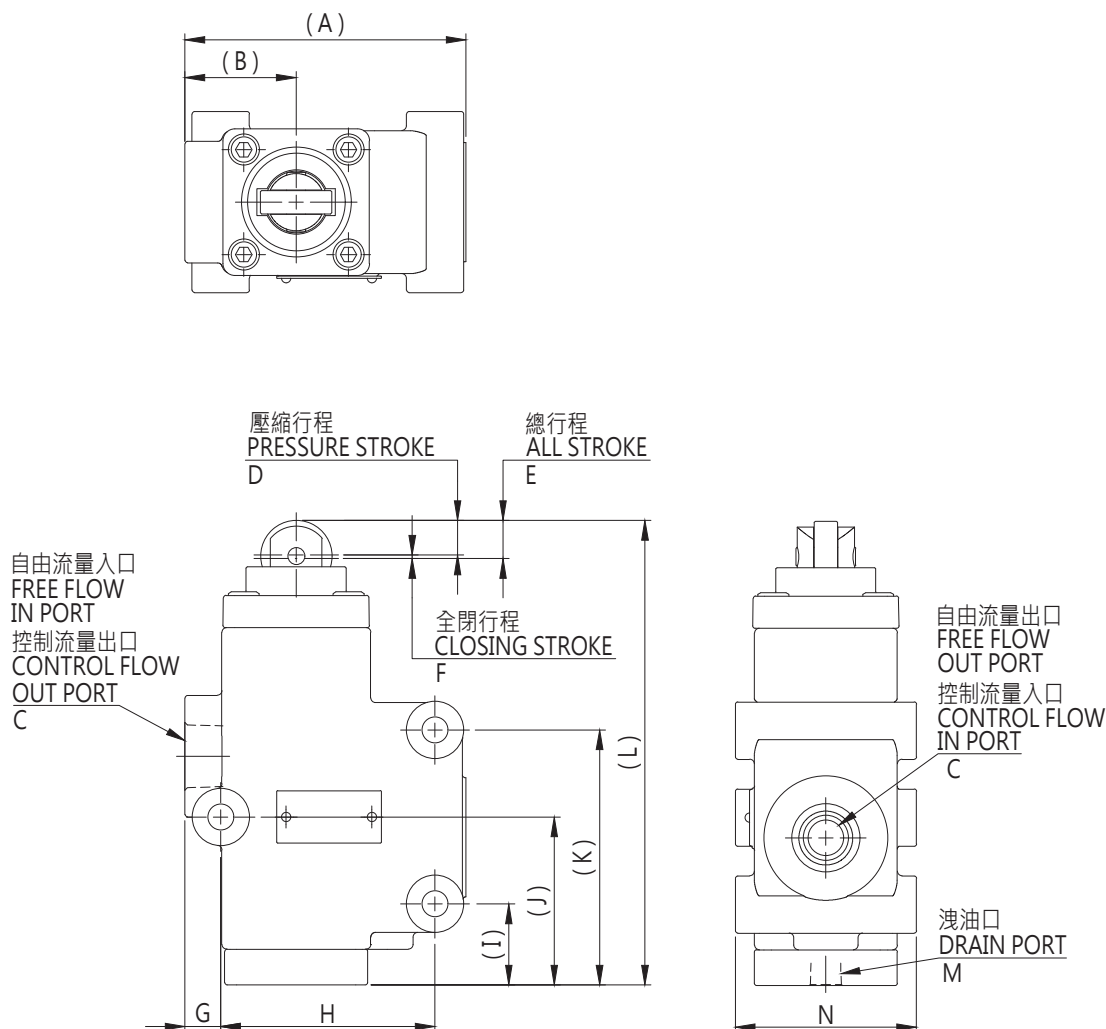
安裝型式 MOUNTING
T : 管式安裝 THREADED CONNECTIONS

系列編號 SERIES NUMBER

單位 UNIT : mm

安裝尺寸 INSTALLATION DIMENSIONS

ZCT-03,06



型式 MODEL	A	B	C	D	E	F	G
ZCT-03	113.5	45.2	PT 3/8"	8.5	13	4.5	14.2
ZCT-06	118	46.7	PT 3/4"	14.5	16	1.5	15

型式 MODEL	H	I	J	K	L	M	N
ZCT-03	84	28.5	44.5	96.5	158.3	PT 1/4"	67.6
ZCT-06	90	34	70.5	107	195	PT 1/4"	76